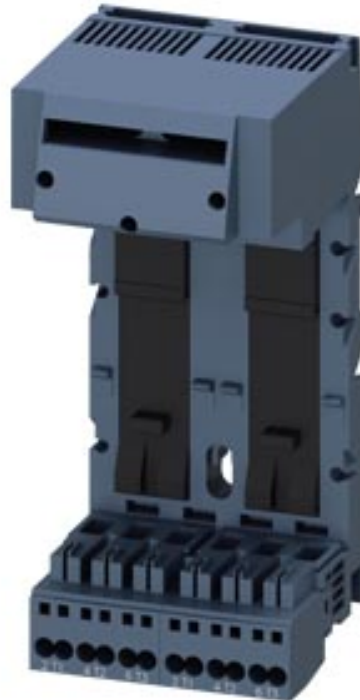


DOUBLE EXTENSION BLOCK, CONNECTION MAIN  
CIRCUIT: SPRING-LOADED TERMINAL, 2 SLOTS  
FOR COMPACT LOAD FEEDERS









General technical data:		
product brandname		SIRIUS
Product designation		2-expansion block
Protection class IP		IP20
Degree of pollution		3
Number of slots for compact feeder		2
Installation altitude at height above sea level maximum	m	2 000
<b>Ambient temperature</b>		
• during transport	°C	-55 ... +80
• during storage	°C	-55 ... +80
• during operation	°C	-20 ... +60
<b>Vibration resistance</b>		f = 4 to 5.8 Hz; d = 15 mm; f = 5.8 to 500 Hz; a = 2 m / s <sup>2</sup> 10 cycles
<b>Shock resistance</b>		Semi-sinusoidal a = 6 m/s <sup>2</sup> at 10 ms; 3 pos. and 3 neg. Shock in all axes
Equipment marking acc. to DIN EN 61346-2		K
Equipment marking acc. to DIN 40719 extended according to IEC 204-2 acc. to IEC 750		K

Main circuit:		
Operating current at AC at 400 V rated value	A	63
Operating voltage at AC-3 rated value maximum	V	690

Installation/ mounting/ dimensions:		
<b>Mounting type</b>		screw and snap-on mounting
<b>Width</b>	mm	90
<b>Height</b>	mm	197
<b>Depth</b>	mm	100

Connections/ Terminals:		
Type of electrical connection for main current circuit		spring-loaded terminals
<b>Wire stripping length for main contacts</b>	mm	10
Connectable conductor cross-section for main contacts for load-side outgoing feeder		
• solid	mm <sup>2</sup>	1.5 ... 10
• stranded	mm <sup>2</sup>	1.5 ... 10
• finely stranded with core end processing	mm <sup>2</sup>	1.5 ... 6
• finely stranded without core end processing	mm <sup>2</sup>	1.5 ... 6
AWG number as coded connectable conductor cross section for main contacts for load-side outgoing feeder		14 ... 8
Type of connectable conductor cross-sections for main contacts for load-side outgoing feeder		
• solid		2x (1.5 ... 6 mm <sup>2</sup> ), 1x (1.5 ... 10 mm <sup>2</sup> )
• stranded		2x (1.5 ... 6 mm <sup>2</sup> ), 1x (1.5 ... 10 mm <sup>2</sup> )
• finely stranded with core end processing		2 x (1.5 ... 6) mm <sup>2</sup>
• finely stranded without core end processing		2 x (1.5 ... 6) mm <sup>2</sup>
Type of connectable conductor cross-sections at AWG conductors for main contacts for load-side outgoing feeder		2 x (16 ... 10), 1 x (16 ... 8)

Certificates/ approvals:

General Product Approval			EMC	Declaration of Conformity	Shipping Approval
 CSA	 UL		 C-Tick	 EG-Konf.	 BUREAU VERITAS

Shipping Approval					other
 DNV	 LRS	 PRS	 RINA	 RMRS	<a href="#">Environmental Confirmations</a>

other
<a href="#">Confirmation</a>

Safety related data:

Protection against electrical shock	finger-safe
-------------------------------------	-------------

Further information

**Information- and Downloadcenter (Catalogs, Brochures,...)**

<http://www.siemens.com/industrial-controls/catalogs>

**Industry Mall (Online ordering system)**

<http://www.siemens.com/industrymall>

**Cax online generator**

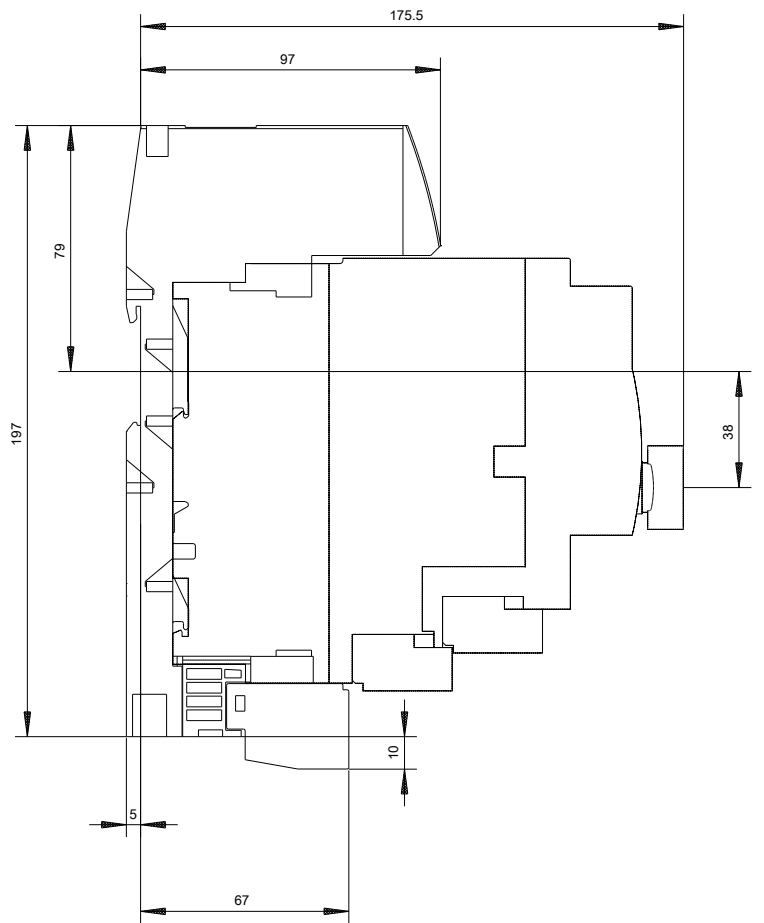
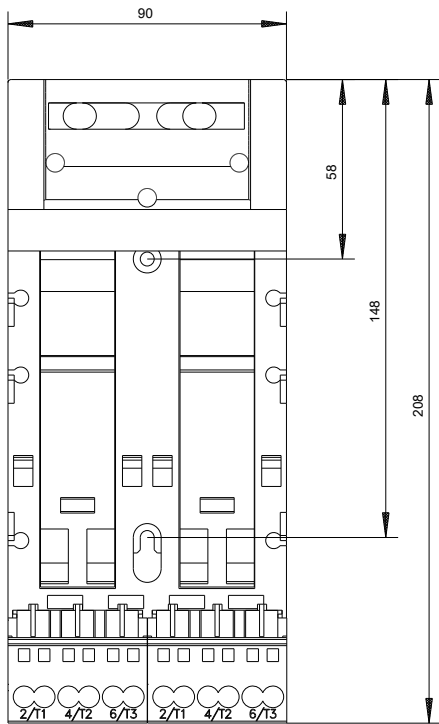
<http://support.automation.siemens.com/WW/CAXorder/default.aspx?lang=en&mlfb=3RA6822-0AC>

**Service&Support (Manuals, Certificates, Characteristics, FAQs,...)**

<https://support.industry.siemens.com/cs/ww/en/ps/3RA6822-0AC>

**Image database (product images, 2D dimension drawings, 3D models, device circuit diagrams, EPLAN macros, ...)**

[http://www.automation.siemens.com/bilddb/cax\\_de.aspx?mlfb=3RA6822-0AC&lang=en](http://www.automation.siemens.com/bilddb/cax_de.aspx?mlfb=3RA6822-0AC&lang=en)



last modified:

07/01/2017